

9.4 List of Satellite Imagery

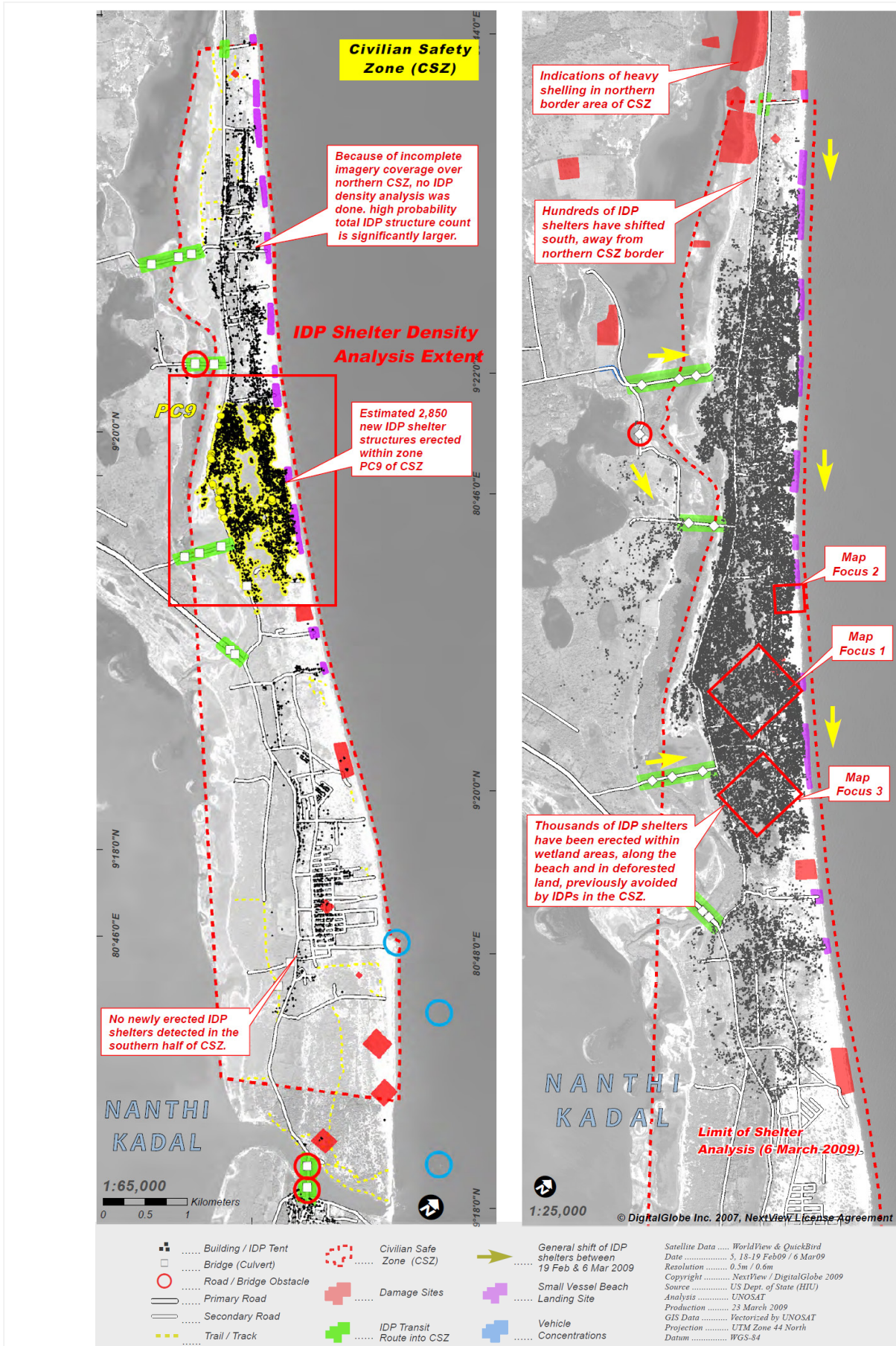


Figure 9.4-1: Assessment by UNITAR/UNOSAT of 19 February (LEFT) and 6 March (RIGHT) satellite imagery – Source: unitar.org

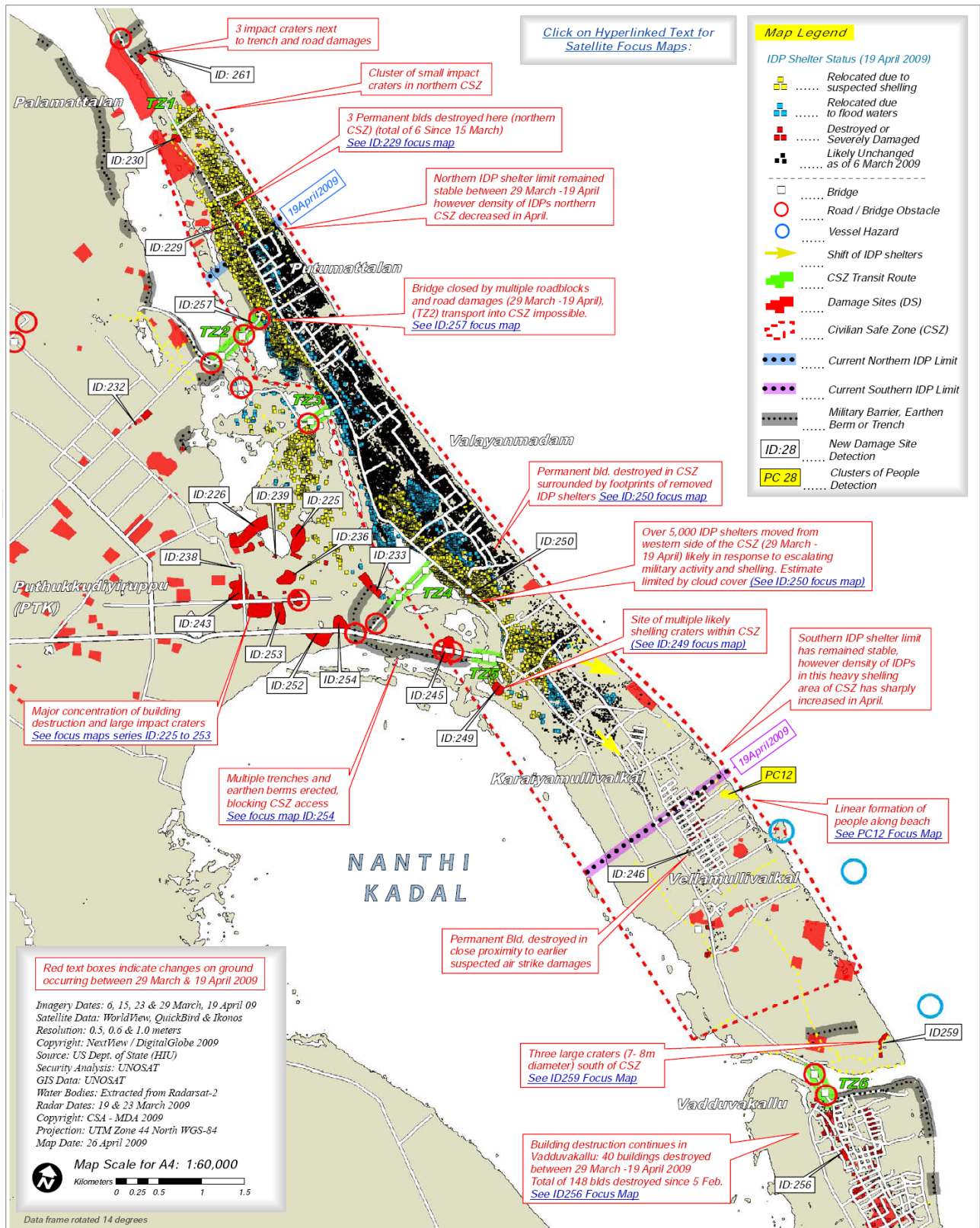
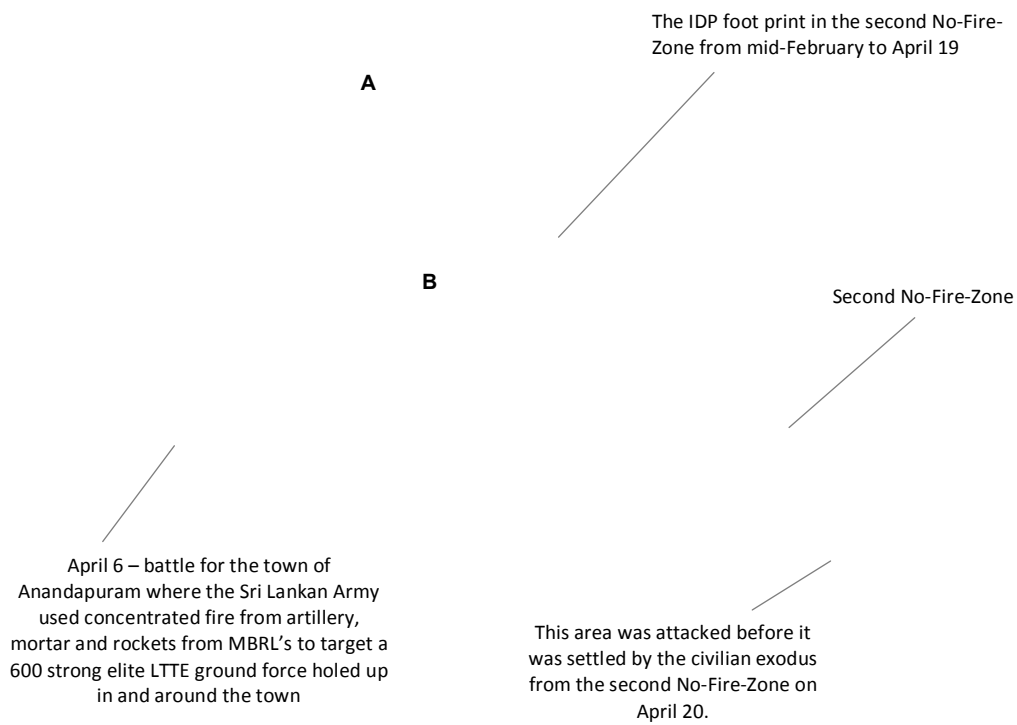


Figure 9.4-2: Assessment by UNITAR/UNOSAT of 19 April 2009 satellite imagery – Source: unitar.org



Areas shown in RED are the regions marked out in the UNOSAT analysis as having been attacked from mid-February to April 19. As can be seen a vast majority of the attacks are outside concentrated civilian settlement areas



× 200 m



Figure 9.4-4: (TOP) 81mm mortar crater, taken by TamilNet. Images were taken on 12 May 2009. The person standing up gives an indication of diameter of crater. Note peripheral ejecta of soil along the raised rim of the crater. (BOTTOM) Mortar craters in the second No-Fire-Zone as seen from satellite imagery. Images were taken on 24 May 2009, and represent 81mm and 120mm shell craters – Source: tamilnet.com & earth.google.com



× 200 m

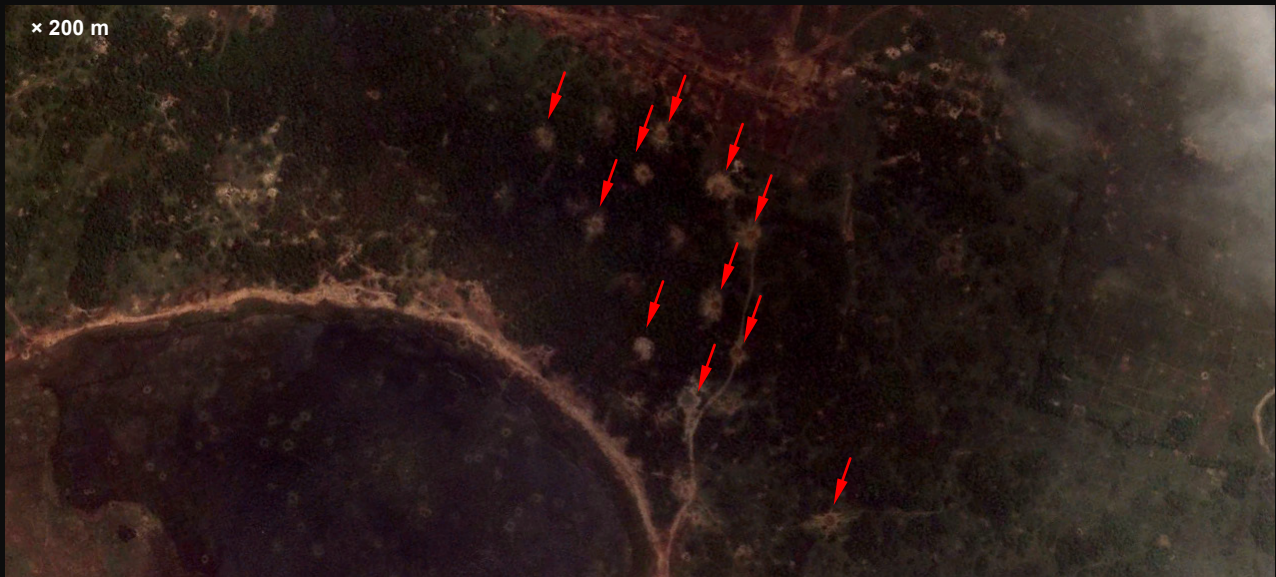


Figure 9.4-5: (TOP) 130mm artillery shell crater, taken by TamilNet. Images were taken on 27 July 2007. The person standing up gives an indication of diameter of crater. Note peripheral ejecta of soil along the raised rim of the crater. (BOTTOM) Artillery craters in the second No-Fire-Zone as seen from satellite imagery. Images were taken on 24 May 2009, and represent 152mm and 130mm shell craters – Source: tamilnet.com & earth.google.com

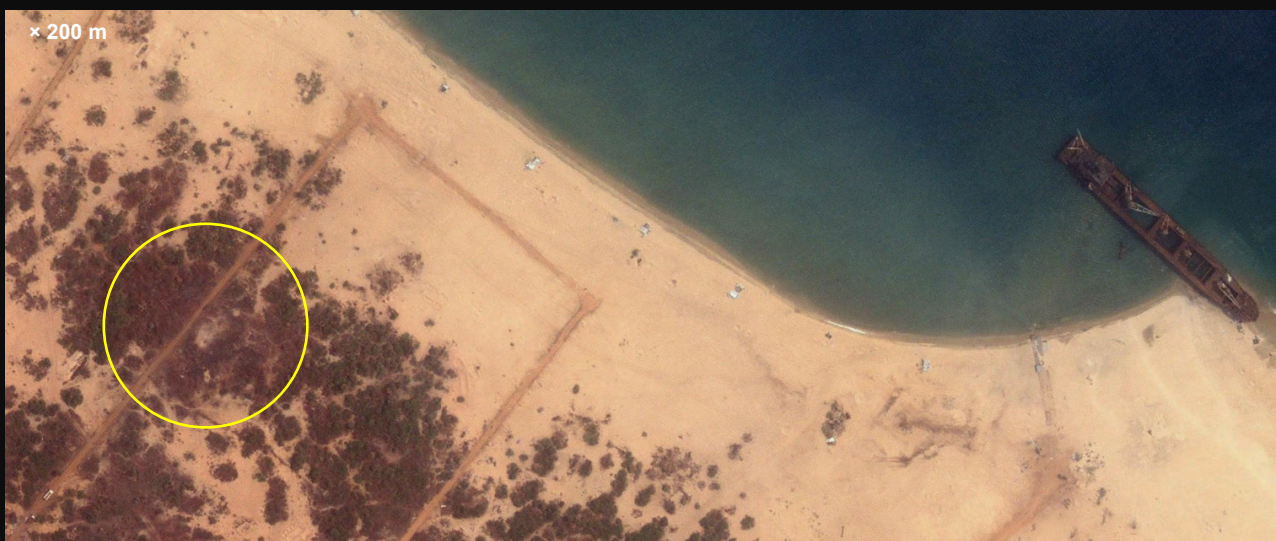


Figure 9.4-6: (TOP) An area razed by MBRL rockets, taken by The Times. Images were taken on 24 May 2009. Note discolouration of the soil due to intense heat and the burned trees. (BOTTOM) The same site as seen from satellite imagery. Images were taken on 24 May 2009. The discolouration of the soil and burnt trees are clearly distinguishable from the surrounding vegetation and soil – Source: thetimes.co.uk & earth.google.com



Figure 9.4-7: Locations of LTTE heavy artillery in relation to the civilian settlement foot-print during the last week of the war – Source: army.lk & earth.google.com



Figure 9.4-8: Examples of the some of the heavy calibre weaponry recovered from the Vellamullivaikal and Karayamullivaikal areas on 18 May 2009 – Source: army.lk